

Table 3.33. Effect of setting the temperature +3 °C on the detection parameters in plasma

Parameters	Amlodipine	Glimepiride	Atrovastatin
Area	869891	1371725	4137533
RSD%	1.17	1.82	1.52
Theoretical plates	11700	11954	11809
Asymmetry	1.03	1.03	0.96

Table 3.34. Effect of setting the temperature -3 °C on the detection parameters in plasma

Parameters	Amlodipine	Glimepiride	Atrovastatin
Area	877210	1348927	4116298
RSD%	0.78	0.82	0.39
Theoretical plates	11700	11954	11809
Asymmetry	1.23	1.03	0.46

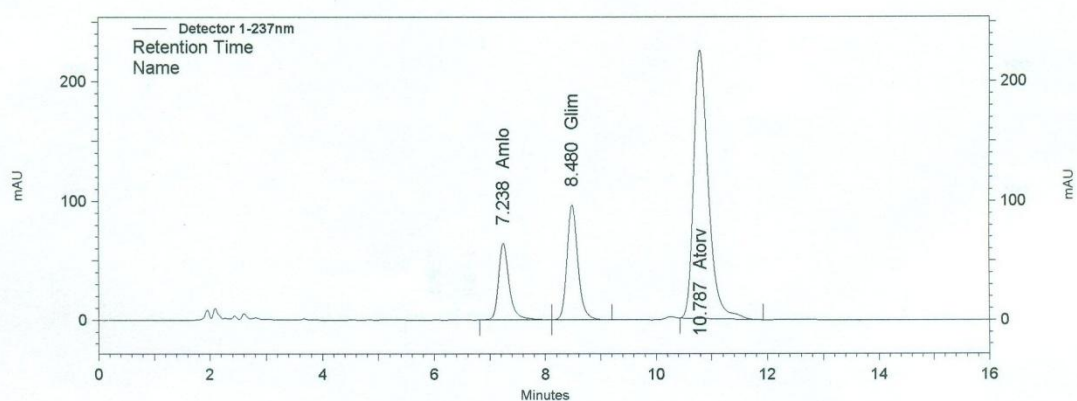


Figure 3.25. Chromatogram of amlodipine, glimepiride, and atorvastatin when prepared in plasma and temperature set at 28°C